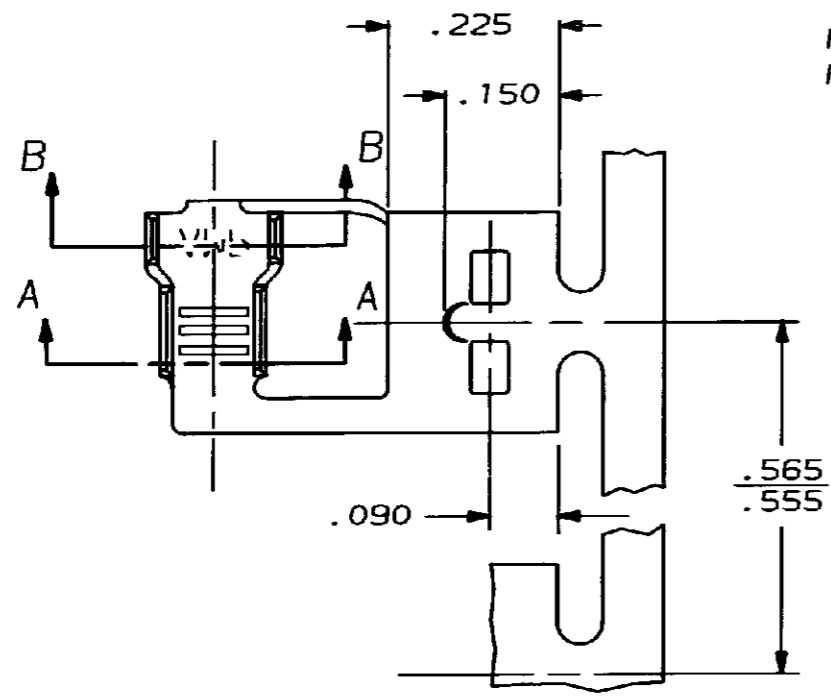


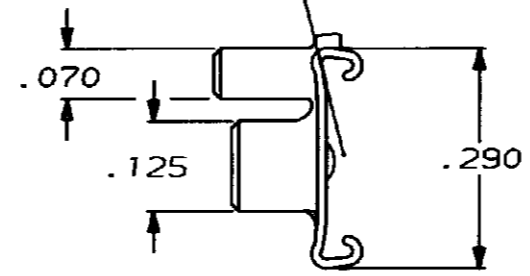
DRAWING MADE IN THIRD ANGLE PROJECTION

THIS DRAWING IS UNPUBLISHED. RELEASED FOR PUBLICATION .19
 © COPYRIGHT 19 BY AMP INCORPORATED, HARRISBURG, PA. ALL INTERNATIONAL RIGHTS RESERVED. AMP PRODUCTS MAY BE COVERED BY U. S. AND FOREIGN PATENTS AND/OR PATENTS PENDING.

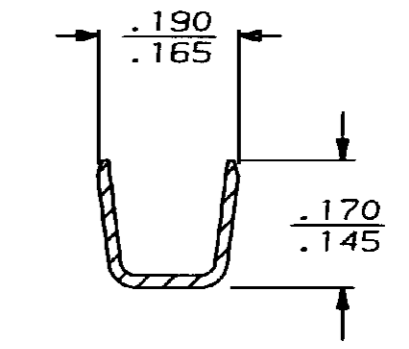
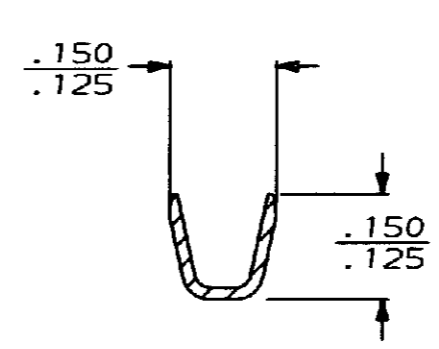
LOC	DIST	P	F	ZONE	LTR	DESCRIPTION	DATE	APPROVED
AF	50				S	REVISED AF-7659	10/18/85	JR/CM



FITS .250 SERIES FASTON TAB



1 - CONTINUOUS STRIP ON REELS.



SECTION A-A

SECTION B-B

.090-.140	18-14	.032	TIN	.016 PH BRONZE	60290-3
.090-.140	18-14	.032	TIN	.016 4M BRASS	60290-2
.090-.140	18-14	.032	---	.016 4M BRASS	60290-1
INSUL RANGE	WIRE SIZE	TAB THK ±.001	FINISH	MATERIAL	PART NO

TYPE	WIDTH	STRIP LENGTH ±.015	TYPE	WIDTH	±.002 HEIGHT	WIRE
F	.155	.188	F	.110	.073	14
					.064	16
					.058	18
INSUL BARREL CRIMP			WIRE BARREL CRIMP			

UNLESS OTHERWISE SPECIFIED DIMENSIONS ARE IN INCHES
 TOLERANCES ON:
 2 PL DEC ±
 3 PL DEC ± .015
 ANGLES ±

DR JR RUTH 10/4/85
 CHK G YETTER 10/4/85
 APPD C MEYERS 10/4/85
 APPD R KUZO 10/4/85

MATERIAL _____
 FINISH _____
 APPLICATION SPEC 114-2079
 WEIGHT _____

AMP | AMP INCORPORATED
 Harrisburg, Pa. 17105

NAME: **.250 SERIES FLAG FASTON RECEPTACLE**

SIZE: **B** | FSCH NO: **00779** | DRAWING NO: **60290**

SCALE: **NTS** | SHEET: **1 OF 1**

AMP 1470-15 REV 10-84

18 OCT 1984 07:46:44 AMP1340 4512840291217404272141.FASTON-CEB4.250-FL

CUSTOMER DRAWING